

GRANBURY QUILTERS' GUILD NEWS

Volume XXV III Number 3

March 2025

2025 OFFICERS

President:
Yvette Richey
1st VP:
Angie Walters
Kay Makens &
Linda Hyde
Secretary:
Mary Ann Sciller
Treasurer:
Cheryl Craig
Parliamentarian:
Joy Kelly

2025 COMMITTEE CHAIRS

Block of the Month
Kathy Tingley
Community Service
Diane Papaj
Gail Olney
Quilt of Valor
Kathy Cosand
Gail Olney
Door Prizes
Linda Keithley &
Pat Powell
Hospitality
Jill Henriksen &
Sally Keith
Membership
Nelda Johnson
Welcome Committee
Sharen Gilliland
Newsletter
Joy Kelly
Spring Retreat
Linda Hyde
Fall Retreat
Glenda Marsh &
Joy Kelly
Quilt Show Chairs
Joy Kelly &
Carolyn Sponsky
Show n Tell
Nancy Marstiller
Sunshine & Shadow
Theresa Nunn
Technical Support
Brittany Meagher
Publicity
Linda Hyde
Webmaster
Joy Kelly

Long armers that quilt our donation quilts:

Carolyn Sponsky
Donna Eyre
Darlena Burnett
Jamie Skelton

Greetings from the Pres.



St. Patrick's Day is a celebration of Ireland's patron saint, St. Patrick, and the arrival of Christianity in Ireland. It's also a celebration of Irish culture.

St Patrick was kidnapped when he was 16 and sent to Ireland as a slave. He escaped, but later returned to Ireland as a missionary. With emigration to the United States, St Patrick's day became more of a secular celebration and not limited to the Irish only. How many of you still wear green on St Patrick's Day? I remember that if you didn't wear green, all the other kids were allowed to pinch you, ouch!

The Irish Chain quilt pattern originated in the United States in the early 1800s, and is based on weaving patterns. The pattern's exact origins are unknown, but it's believed to have come from Irish immigrants. Irish Chain quilts have distinctive negative spaces that are often filled with quilted designs. In a traditional Irish Chain, the squares form a diamond pattern.

Don't forget the New Bee on the 2nd Thursday. 12-4 at the Granbury Church of the Nazarene.

Yvette Richey, President



Membership Report

At the February meeting, we had 43 members and 5 guests.

New Members: 1. Loretta Schallenkamp
2. Reggie Ward
3. Rita Isbell (returning member)
4. Eileen Tims

Current membership is 63 happy quilters.

Nelda Johnson, Membership Chair

What To Bring:

- ⇒ Name Tag
- ⇒ Show N Tell
- ⇒ \$\$\$ for Door Prize tickets
- ⇒ Block of the Month
- ⇒ Membership Form (available page 11 of newsletter)

Go to Facebook, Granbury Quilt Guild. Our Logo is in the lefthand corner and the profile picture is our 2019 raffle quilt. If you are on Facebook, LIKE our page!
<https://www.facebook.com/granburyquiltguild/>



**Guild Meeting– Monday,
March 17th @ 6:00 pm
@ United Co Op
320 Fall Creek Hwy
www.granburyquiltguild.com**

Email: quiltguildofgranbury@gmail.com ~
Website: www.granburyquiltguild.com

Minutes of Granbury Quilt Guild January 20, 2025

February 16, 2025 MINUTES

The meeting was called to order by President Yvette Richie at 6:30. All were welcomed.

Angie Walters introduced upcoming programs. **Tonight** will be Kathy Cosand who is giving an overview on how to make MONDO BAGS. Kathy is providing a workshop **March 10, 1:00-4:00** at Healthy Connections. The bags come in 4 sizes. Patterns are by Quilt Smart Pattern and need to be ordered. Signup at the side wall table. (She suggested your fabric is cut to size before the workshop). The **March program** will be provided by a quilting judge named Lisa Erlandson. The **April 12** evening program will be by Dorene Joyce who will have an earlier workshop from 10-1 on how to make “stained glass” or “landscape” quilts. Sign up at the table.

The **minutes of the January** meeting and the Newsletter were briefly discussed by Yvette. She asked for a motion to accept. Stephanie Mosley motioned to accept the minutes and Annette Worthington seconded. **All approved.** Then Yvette asked if we had looked at the **Treasury Report**. Joy Kelly motioned to accept the Treasury Report and Linde Hyde second. **All approved.**

Joy went over the proposed **Bylaw changes** . She explained that they were 20 some years old and no longer in alignment with actual practices, so hence an update. All seemed appropriate except for the name change from Granbury Quilters Guild to Granbury Quilt guild. Several people mentioned that the name must be in alignment with how the IRS 501c-3 name is stated. Joy will look at the Treasury Papers to verify. Someone then mentioned that we might be able to just add “doing Business As Granbury Quilt Guild”. She will look into that. The changes will also show that we have two Vice Presidents and that this will allow for training and result in a smoother and less stressful transition from year to year. The office of Historian is to be deleted. We will vote on proposed changes next month.

Challenge Quilt... Bonnie Rhoby presented the idea of a mystery quilt where we find out each month what we need to do. These next few weeks , if you want to participate, get 3 coordinated fat quarters and bring to the meeting in a paper bag. Apparently there will be a drawing! Sounds interesting! I wonder what the next step will entail???

Glenda Marsh presented a **challenge** concerning more **NICU quilts**. She passed out some cute panels , said they will be due at the April meeting and there will be a drawing in May for Pampered Chef stoneware for those who participate. Go for it girls.:) Keep those babies warm.

A request was shared from the **Arlington Shakespeare Play** Troupe. They desperately need helpers to sew costumes on March 8,15,and 16 from 10:00 to 4:00. Everything will be pinned ahead of time so you just need to bring your machine and sew.

Sewing Bees will be held the 2nd Thursday of each month at the Nazarene Church on Lipan Hwy,12 - 4. Come sew on your projects and enjoy getting to know someone new and maybe learn a thing or two.
Committee Reports

Membership: Nelda Johnson said we had 43 members present and 4 guests, Membership cards are now available that will get you a discount at Sew Much Love.

BOM: Kathy Tingley said there were 8 “Old Blue and Yeller” blocks returned. Next month will be a 6” off white and Spring color block.

Community Service: Diane Papaj and Gail Olney would like help in finding new contacts to which we can donate quilts. They showed us a new pattern that Joy Kelly designed for wheelchair recipients. It has a hand warmer pocket and a gadget pocket. Good job Joy!

Continued on page 3

Continued from page 2

QOV: Kathey Cosand and Gail Olney are in charge. The Wednesday after Guild meeting space is available at Healthy Connections on Waters Edge Rd from 9:00-3:00. Come to cut, sew, press or organize fabric.

Door Prizes: Linda Keithly and Pat Powell had 4 prizes to pass out.

Hospitality: Jill Henrikson and Sally Keith got the beverages ready and asked for an applause for those who brought us yummy treats.

Sunshine and Shadow: Theresa Nunn shared that Marsh Gilbert recently lost her Father. Cards and prayers would be appreciated.

Spring Retreat: Glenda Marsh and Joy Kelly said all is ready for 2/27 and room assignments have been made. Look forward to a weekend of sewing with friends and no computers!

Quilt Show: Joy said there will be a section for those who want their quilt judged. Set up is Oct. 16. Show is 17-18. Space is available for a few vendors and 60-70 quilts. Linda K is in charge of set up. WE need people to volunteer to be "White Gloves " and food area helpers as well as set up and tear down.. See Linda K.

Publicity: Brittany said there was a survey by the Annual Quilters Survey. Companies wanting to know what you want.

Newsletter : Joy asked that we get information on anything to her by the 5th of each month.

Website: Joy said it is coming along.

Show and Tell: There were 10 people to share their ware but first they had to tell their name, where they were from, what brought them to Granbury and how long they have lived here.

Meeting closed at 8:11

Respectfully submitted by Secretary Mary Ann Schiller



Fat Quarter Quilt Challenge

Just a reminder to bring your, **three coordinated fat quarters** in the paper bag to the meeting. (don't have a bag or lost yours, don't worry I have plenty)

If you missed last month, we are doing a quilt challenge; not due until December. You will draw a number and receive the bag matching that number, instructions for the challenge will be in the bag. Thanks for participating

Bonnie and Jill



Treasurer's Report

February 28, 2025



<u>Beginning Balance:</u>		
Operating Account	6,053.74	
Savings Account	5,053.74	
	TOTAL	11,108.48
<u>Revenues:</u>		
Deposit—Membership	400.00	
Interest	.78	
	TOTAL REVENUES	400.78
<u>Monies Hold in Trust</u>		
Deposits—Red Boot	1,110.00	
	TOTAL TRUST	1,110.00
<u>Expenses:</u>		
U.S. Postal Serv-Box	226.00	
T. Rittenhour-Bingo Supplies	18.11	
	TOTAL	244.11
<u>Monies Held in Trust Distributions:</u>		
Red Boot Refund	330.00	
	TOTAL	330.00
<u>Ending Balance:</u>		
Operating Account	6,989.63	
Savings Account	5,055.52	
	TOTAL	\$12,045.15



GLENDA'S PANEL CHALLENGE

Panels should be turned in no later than April mtg.

Member should put name on a small piece of paper & pin to back.

Do not show panel at March or April mtg. Just turn in to Glenda & all panels will be shown at May mtg, voting, 2 winners drawn...

Any questions contact Glenda 979-236-0728



GRANBURY QUILT GUILD PROGRAMS 2025

Mar. 17 How to Make your Best Quilt by Lisa Erlander, Quilt Judge and Appraiser

Apr. 21 Trunk Show and Lecture by Dorene Joyce, Award Winning Quilter – My Roses Art Quilt workshop (same day)

May 19 The Amazing Blind Quilter Lecture by Diane Rose

June 16 Journey of an Art Quilter Lecture by Leo Ransom—Workshop Portrait silhouette or layering

July 21 Guild Picnic with Entertainment

Aug. 18 Beginning Machine Quilting with Walking Foot Designs By Angie Walters
Workshop Aug. 19, 1-4pm; Location: Healthy Connections

Sept. 15 Make a Landscape Quilt by Bonnie Rhoby, Award Winning Quilter
Workshop – Sept. 16m 1-4; Location: Healthy Connections

Oct 20 Recap of Show

Nov. 17,18 Art Quilt Lecture by Sandra Mollon, Award Winning Quilter—Workshop

Dec. 15 Guild Christmas Party with entertainment

Hello Everyone,

March Workshop: I would like to remind you of the March 10th, Mondo bag workshop.

Time: 1:00 to 4:00

Location: Healthy Connections, 1321 Waters Edge Dr, #1001
(Down the street from Taco Bell and Wal Mart)

April Workshop: I wanted to let you know that we have an award winning Speaker coming to our guild in April, Dorene Joyce. She is offering a workshop the same day as our guild meeting,

April 21 from 10:00 am to 1:00 pm at the United Co-Op location.

She teaches a technique that looks like stained glass but is done using a background as the lines rather than the traditional method. You can use any of her patterns. We need at least 8 attendees for the workshop. So far, we have 4 signed up. The cost is only \$45.00 (which includes the pattern, a value of \$20). Therefore the class is really only \$25. She will also provide some other supplies. There will be a sign up sheet at our meeting on the back table along with an envelope to make payment. Bring a check (made payable to the guild) or cash.

I look forward to seeing you all soon at the meeting and hopefully at the workshops!

(April workshop supplies next page)

Warm Regards, *Angie Walters, Vice President*





My Roses Pattern – Fabric Requirements

Creating ... Teaching... & Celebrating Life through Art & Quilting.

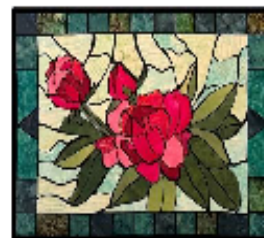
Note: I recommend using Batik fabrics as they are more closely woven with 220 threads per inch which means they tend to fray considerably less and turn out to be a great choice for applique. (Try Batik.com or your local quilt shop.)

Quilt Top


Support Foundation /Background - Black Batik -100% Cotton with high thread count.

Roses with stained glass background - 3/4 yard for Size: 20 X 25 - Makes 2

OR Roses on Black background 1/2 yard for Size: 15 X 20 – Makes 2



Fabric should be your choice of mottled backgrounds or whatever you want to use. **Example: Bali Watercolors** 1529 watercolor or other types of batiks will work best! Bring more to have ability to use your design skills as you go. Sometimes until you see them together, you don't know what colors are best to use.

<p>Leaves – 3 – 4 different shades</p> <p>-Varied shades of Light, Medium and Dark greens</p>	<p>3 to 4 various shades of green.</p> <ul style="list-style-type: none"> • Use strips of various light, medium and dark shades that are about 4-6" in width x 12" length.
<p>Flower Petals</p> <p>-Varied shades of Light, Medium and Dark of your flower petal colors</p>	<p>3-4 different shades of the colors desired in the roses.</p> <ul style="list-style-type: none"> • 1 piece 12" X 9" of the main color and • 2-3 pieces sized 12" x 6" for the accent colors.
<p>Flower Stained Glass Background</p> <p>3-5- Fat Quarters of varied mottled batiks</p>	<p>3-5 Fat quarters of mottled batiks. I used light in the center and darker on the edges for the example.</p> 

Other Supplies Needed

- 12" x 2-3 yards fusible web - Pellon EZ-Steam II Fusible EZ212 (*can use equivalent sheet packages **must be pressure sensitive** to be able to stick on the foundation background.)
- Black Thread for Quilting (Black 50 wt. or preferred weight)
- Invisible thread - Clear and Smoke - For the applique to make it invisible - **OR** Closely matching thread 50 Wt. to 100 Wt.
- Binding ¼ Yard
- Backing ½ Yard
- Micro-Serrated Blade Scissors – 4" to 6" I like to have a couple sizes for use with varied sizes of pieces.
- Iron
- Non-Stick Heat Pressing Sheet. Teflon Sheet
- Design Board - Recommend using Insulation board - size at least 20 X 28
- Batting - Recommend Quilters Dream = "Request" This is a very thin Cotton batting - size needed 20 X 28
- Pins for pinning your background and the vinyl to your design board. Optional - T-Pins are helpful.
- Stiletto – Sharp pointy tool for scratching off the paper and for holding things in place.
- Freezer Paper 18" wide - 56" total
- Borders and Binding as desired.
- 20' x 1 yd -Black Fusible stabilizer for appliques - SF-101 ShapeFlex /Fusible Woven Cotton – Black or White

BOM March 2025

Cathy's Campfire from Quilterscache 6" block (6 1/2" raw)

<https://www.quilterscache.com/C/CathysCampfireBlock.html>

generations-quilt-
patterns.com/no-waste-flying-
geese-quilt-blocks.html

Go all the way to the end of these generations instructions and you will find two charts for cutting all sizes of flying geese using the 4 at a time method(s).

Three colors. Off white and two different shades of a "spring color".



For this 6" block you will use off-white for the sky and a spring color for the geese. A second shade of your spring color will be the five 2 1/2" squares.

Using whichever method you choose, make 8 flying geese that finish 1" X 2" (1 1/2" X 2 1/2" raw). Sew them into four sets of two geese. Press toward the top goose. Press the rows in opposite directions and then sew your rows together as shown in the photo.

Cutting: 5 each 2 1/2" squares spring color

Cutting: **4 at a time no waste flying geese:**

from a second spring color cut two each 3 1/4" squares
and from off white cut eight each 1 7/8" squares.

Option: If you want your geese to be oversize so you can trim them down, then

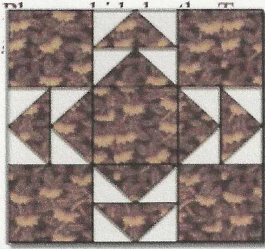
Cutting: **4 at a time no waste flying geese – OVERSIZE:**

from a second spring color cut two each 3 1/2" squares
and from off white cut eight each 2 1/4" squares.

Thank you, *Kathy Tingley*, Block of the Month Chair

Cathy's Campfire

This makes a 6" block!...



AS from the Jane Stickle Quilt. If you are

and is my rendition of Block unfamiliar with this quilt, I urge you to go to <http://www.dearjane.com> to see the quilt, and read about this wonderful woman!!

** Preparing the Pieces and Sewing the Block **



First mark and cut the Color 1 2-1/2" x 12-1/2" strip into five 2-1/2" squares...



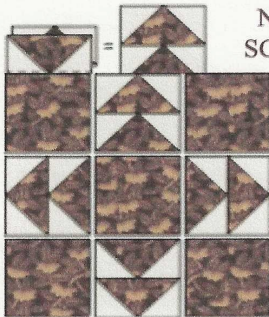
Next mark and cut the Color 1 3" x 10" strip into eight 1-1/2" x 2-1/2" rectangles...



Now mark and cut the Color 2 3" x 12" strip into sixteen 1-1/2" squares...



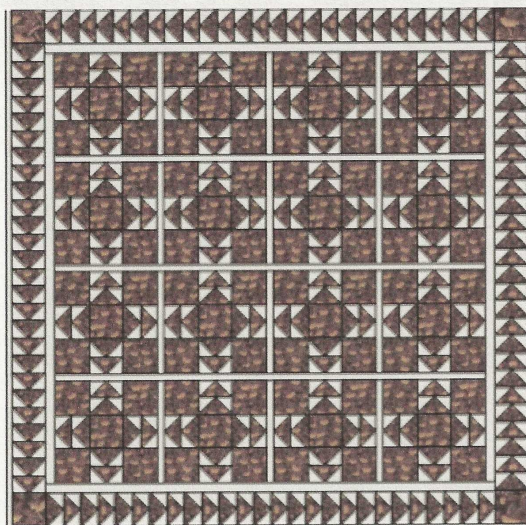
Place a small Color 2 square atop the left end of a Color 1 rectangle, right sides together and with all edges aligned. On the back of the small square, lightly mark the diagonal, and sew ON this marked line. Cut off the excess seam allowance, leaving 1/4". Press the seam towards the inner triangle. Repeat this with another small square on the other end of the rectangle. Make eight of these units...



Now sew the flying geese units together in pairs, using as always a SCANT 1/4" seam. Make four units. Press seams towards the upper side unit...

Then sew the units together to make rows, and join the rows to make the block. On the top and bottom rows, press the seams towards the outer units. On the middle row, press the seams towards the center square. When joining rows press seams in alternating directions...and You Are DONE! :o)

...on to Page 2!



- Page 2

This quilt would be small! It is a four by four, with very narrow sashings between the blocks, a thin border surrounding the center blocks, and then a flying geese border around the whole.

Happy Quilting!

Marcia :o)

Here's Glenna's! Leah's!
Karlene's! Sandra's!



The Compass Centre Shoppe

**FALL RETREAT – Compass Centre
SAVE THE DATE
September 11th—13th, 2025**

QUILTS OF VALOR

We will meet for Quilts of Valor at the Wellness Center on Waters Edge on March 19th from 9-3. 1321 Waters Edge Drive, #1001 (down the street from Walmart)

I have attempted to start a Granbury Quilts of Valor Stitches Facebook page. I can use some help editing the cover phot for now. As of now, it is an open page. I hope to post all the work we are doing so we have an archive. Please take a look at it and join as members, please.



Thank you all for your support to this worthwhile cause!

Kathy Cosand, & Gail Olney

Sunshine and Shadow

**If you know of a guild member who is ill and needs a little cheering up, Please contact Theresa Nunn and let her know. Theresa's contact info:
804-832-3388; tlnunn87@gmail.com**

Janet Moore~Sympathy~loss of her husband
Laura Jones Family—Sympathy—Laura passed
Lou Bates—Thinking of Your—Surgery
Bonny Arlington—Tinking of You—on hospice

Well, unfortunately that's a record of cards out in one month for the last year or two. Prayers we get some "sunshine".



Theresa Nunn, Sunshine and Shadows Chair

Granbury Quilters' Guild meets on the third Monday of the month at 6:00 pm at the United Co-Op, 320 Fall Creek Hwy, Granbury. Membership is open to anyone interested in quilts and quilting. Annual Dues are \$25 per calendar year (+ \$5 if newsletter can't be electronically sent monthly). Guests may attend two meetings before joining.

Newsletter Ad rates: Business card: \$5; 1/4 page: \$10; 1/2 page: \$20; Full page: \$30

Deadline is the 5th of every month.

Contact: Joy Kelly at joygaylekelly@gmail.com or call 817-919-0467.

Community Service Committee (CSC)

Our committee distributes quilts to individuals and organizations throughout our community all year long. We donate quilts to nursing homes, hospitals, women's organizations, and more. We also provide quilts to individuals with immediate needs. These projects offer warmth and comfort to many, made possible by our talented members and generous fabric donations. We graciously accept donations, including quilt tops, finished quilts, and quilting fabric for use or completion. Join us to spread comfort and kindness, one stitch at a time.

Here are some categories for quilt designation:

- NICU Isolette Covers:** Any size is appreciated. Premie quilts (18" to 36" square) should be made with soft cotton or flannel on top and backing, without batting if using flannel. No tied quilts or fleece, as fleece can harbor germs. Isolette covers (36"x46") should be made with batting to create a quiet, darker environment for the babies.
- Nursing Home Throws and Wheelchair Quilts:** Suggested sizes are 38"-40" wide by 40"-46" long for wheelchair quilts, and 50"-55" wide by 60"-70" long for lap quilts.
- Quilts of Valor:** Contact Kathy Cosand and Gail Olney for details. The recommended-size is 60" x 80"; it must be a minimum of 55" x 65" and a maximum of 72" x 90".
- Ada Carey Women's and Children's Shelter (Mission Granbury):** Accepts any size up to 50"x65" (throw size). Children's quilts should be made with bright, child-appropriate fabrics and can be machine washed. Quilts for women and children are appreciated, as they often come in with nothing and cherish having something of their own. These quilts should have no label.

To keep track of donation quilts, members should submit their completed quilts along with the donation slips at the monthly meetings. Donation slips are available at the membership table near the sign-in area (also below). Members can present their donation quilts during Show and Tell. After presenting, place the quilts in the tote labeled "Community Service". The Community Service Committee will handle the delivery of these quilts.

Thank you for your continued support of our community.

Diane Papaj, Community Service 719-960-6520, mrshelotrash@gmail.com

COMMUNITY SERVICE SLIP

Name: _____ Date: _____

Item: _____
(i.e. quilt, quilt top, blanket, dog bed, etc.)

Date item donated: _____

Donated to: _____
(name of organization or individual)

GRANBURY QUILTER'S GUILD

2025 Member Registration Form

PLEASE PRINT

New _____ Renewing _____ Senior (80 + years old) _____ Charter _____

Name _____ **_____ Changes to contact information?**

Spouse's Name _____

Address _____

City _____ State _____ Zip _____

Home Phone _____ Work Phone _____ Cell _____

Emergency Contact _____

E-mail address _____

Receive the newsletter by e-mail? Yes _____ No _____

Or by USPS for the additional cost of \$10.00 a year _____

Birthday (month/day) _____ (year not required)

What is your quilting experience?

Beginner _____ Some quilting experience _____ Intermediate _____ Professional/Master _____

Would you like to:

Serve/help on a committee _____ Be an officer _____ Present a program _____

Arrange a program _____

Do you need transportation to meetings/workshops? _____

Please tell us something about yourself: _____

What kind of programs would you be interested in seeing at guild meetings? _____

What kind of workshops would you participate in? _____

Are you interested in attending the Guild retreat(s)? _____

Feb 27th-March 2nd @ Red Boot Retreat Center.

Compass Centre retreat is scheduled for September 11th—14th.

Please make checks payable to Granbury Quilters' Guild. Annual Dues \$25.00

Amount paid _____ Ck # _____ Cash _____ Other _____

Today's Date _____